

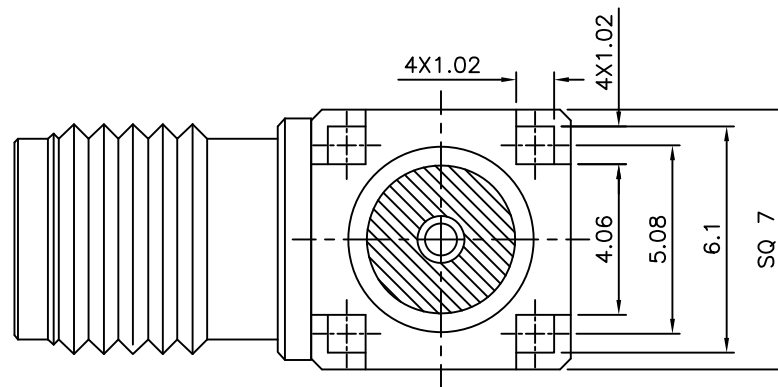
Recommended P.C.B. Layout

SPECIFICATION

Impedance:50 Ohms
Frequency Range:DC~6GHz
V.S.W.R:1.3 Max.
Working Voltage:500V AC
Withstand Voltage:1000V AC At 1 Minute
Insulation Resistance:5000 Megaohms Min.
At DC 500V
Center Contact Resistance:3.0 Milliohms Max./10mA DC
Outer Contact Resistance:2.0 Milliohms Max./10mA DC
Temperature Range:-40°C~+85°C
RoHS Compliant

SMA - J R 50 - BR - H
(1) (2) (3) (4) (5) (6)

- (1) SMA:SMA Connector
(2) J:Jack
(3) R:DIP Right Angle
(4) 50:50 Ohms
(5) BR:Brass Body
(6) H:RoHS Compliant




⑤ Insulator	1	Teflon	
④ Body	1	Brass	Gold Plated Over Nickel
③ Center Pin	1	Phosphor Bronze	Gold Plated Over Nickel
② Insulator	1	Teflon	
① Body	1	Brass	Gold Plated Over Nickel
No. Description	Q'ty	Material	Remark

PROPRIETARY AND CONFIDENTIAL
THE INFORMATION CONTAINED IN THIS DRAWING IS THE SOLE PROPERTY OF AUK AND SHALL NOT BE DISTRIBUTED,
REPRODUCED, OR DISCLOSED IN WHOLE OR IN PART WITHOUT PRIOR WRITTEN PERMISSION OF AUK.

AUK

A MEMBER OF AUK GROUP

太聯事業股份有限公司
AUK CONTRACTORS CO., LTD.

CATEGORY		APPROVED BY		UNLESS OTHERWISE SPECIFIED TOLERANCES ARE X. ±0.1 .X ±0.1 .XX ±0.1							
		MEI									
PART No. SMA-JR50-BR-H		CHECKED BY				HZF					
DRAWING No. SMA-JR50-BR-H		DRAWING BY				CYP					
SCALE	NONE	REV.	BO	UNIT mm		△ BO	NEW RELEASE		HZF	10/18/2023	
						NO. REV.	REVISIONS		CHK	DATE	