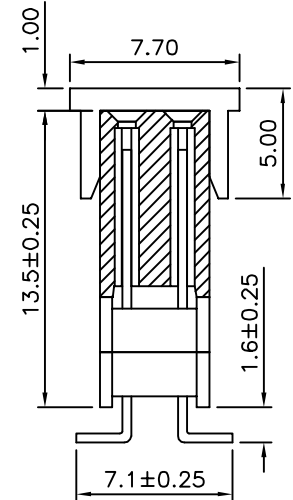
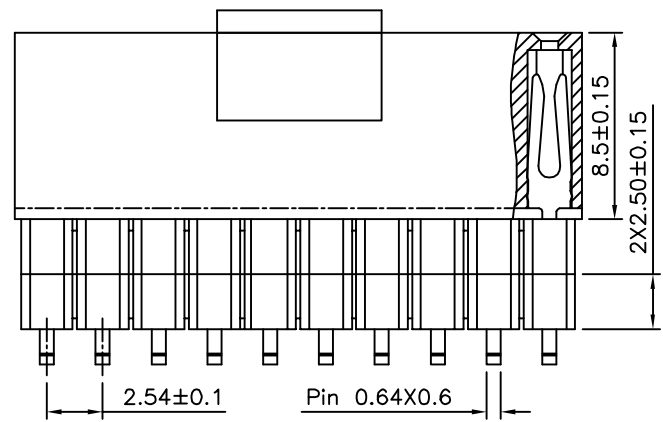
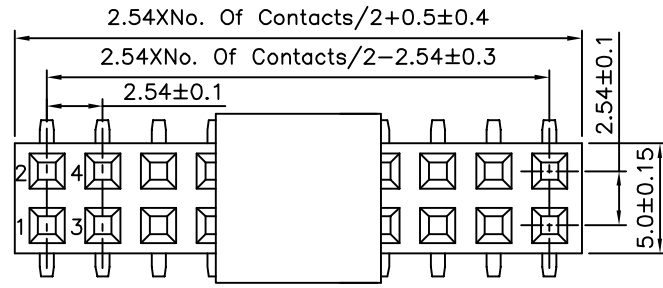


Recommended P.C.B. Layout(Top View)  
(PCB Board Tolerance±0.05)



**SPECIFICATION**  
 Current Rating:3 Amps  
 Withstand Voltage:500V AC  
 Contact Resistance:20 Milliohms Max.  
 Insulation Resistance:1000 Megaohms Min.  
 Operation Temperature Range:-40°C~+105°C  
 Insulator:PA6T(UL94V-0),Black  
 Contact:Brass,Gold Flash Over Nickel  
 RoHS Compliant

FEV B 15 - 2 X XX C - H  
 (1) (2) (3) (4) (5) (6) (7)

- (1) FEV:2.54mm Female Header SMT Straight
- (2) B:Plus Two Plastic
- (3) 15:15.1mm Total Length
- (4) 2:Dual Row
- (5) XX:No. Of Position/Per Row
- (6) C:With Cap
- (7) H:RoHS Compliant

CATEGORY		APPROVED BY		UNLESS OTHERWISE SPECIFIED TOLERANCES ARE X. ±0.25 X.* ±2° .X ±0.20 .X.* ±1.5° .XX ±0.15 .XX.* ±1° .XXX ±0.10 .XXX.* ±0.5°
PART No. FEV15-2XXXC-H		EMILY		
DRAWING No. FEV15-2XXXC-H		CHECKED BY HZF		
SCALE		DRAWING BY HAO		
NONE		REV.	A1	UNIT mm

NO.	REV.	REVISIONS	CHK	DATE
△A1		Modify Data	HZF	04/18/2015
△A0		NEW RELEASE	HZF	11/30/2013